

Sheltering Tree Resist Class

Class includes a video showing 4 types of resist techniques. These instructions include all the details to make 7 different cards with Sheltering Tree.



Supplies:

Sheltering Tree Stamp Set

Inks:

- White Craft Ink
- Garden Green
- Soft Suede
- Crumb Cake
- Versamark
- Blushing Bride
- Strawberry Slush (or darker pink)
- Marina Mist
- Lost Lagoon
- Soft Sky

Cardstocks:

- Whisper White
- Crumb Cake
- Soft Sky
- Lost Lagoon
- Marina Mist
- Naturals White
- Early Espresso
- Pink Pirouette
- White Embossed Designer Paper

Accessories:

- White Embossing Powder
- Clear Embossing Powder
- Dazzling Diamonds Embossing Powder
- Dazzling Details

*You can order supplies from my online store at:
www.marilynsanclemente.stampinup.net/SHOP*

Marilyn SanClemente

978-458-0729 marilyn.sanclemente@comcast.net

White Embossed Sheltering Tree



Cardstock Cutting Dimensions:

Crumb Cake cardstock (c/s): 8 ½" x 5 ½", scored at 4 ¼"

Whisper White c/s: 4" x 5 ¼"

Natural White c/s: 3 ¾" x 5"

Crumb Cake: ¾" x 4"

Marilyn SanClemente 978-458-0729 marilyn.sanclemente@comcast.net

images © Stampin' Up! Stamping New England Designs



Assembly Instructions:

Step 1: Fold **Crumb Cake** cardstock in half to make card base. Attach layer of whisper white cardstock.

Step 2: Stamp Tree Trunk image with **White ink** on the Natural White cardstock 3 times. Cover with white embossing powder and heat until the embossing powder is melted.

Step 3: Ink up large **leaf stamp** with **Garden Green** ink. Stamp leaves on bottom tree. Stamp leaves on other two trees. I wanted the leaves on the two trees to look as if they are in the background. When I inked up the leaf stamp, I stamped first on a sheet of scrap paper, then stamped on my cardstock. This is called Stamping off.

Step 4: Use a sponge dauber and crumb cake ink to add shading behind the trees.

Step 5: OPTIONAL: I added faux stitching around the edge of the card to look as if the card is sewn. To do this line up the paper piercing mat and poke holes along the edge of the card. I used a soft suede Stampin' Write marker to draw in faux stitching lines

Step 6: Attach stamped piece to card front.

Step 7: Stamp "thankful for you" sentiment on a $\frac{3}{4}$ " x $3\frac{1}{2}$ " piece of crumb cake cardstock. Notch the end of the piece to look like a banner. Attach to left edge of card.

Step 8: Thread a piece of linen thread thru a Decorative Button. Attach to the top of the banner with a glue dot.

Marilyn SanClemente 978-458-0729 marilyn.sanclemente@comcast.net

images © Stampin' Up! Stamping New England Designs

Embossed Tree with snow



Cardstock Cutting Dimensions:

Soft Sky cardstock (c/s): 8 1/2" x 5 1/2", scored at 4 1/4"

Lost Lagoon c/s: 5 3/8" x 4 1/8"

Early Espresso c/s: 5 1/8" x 3 7/8"

Whisper White c/s: 4 7/8" x 3 5/8"

Marilyn SanClemente 978-458-0729 marilyn.sanclemente@comcast.net

images © Stampin' Up! Stamping New England Designs

Assembly Instructions:

Step 1: Score Soft Sky cardstock at 4 ¼" and fold in half to form card base. Attach Lost Lagoon layer and Early Espresso layer. Set aside.

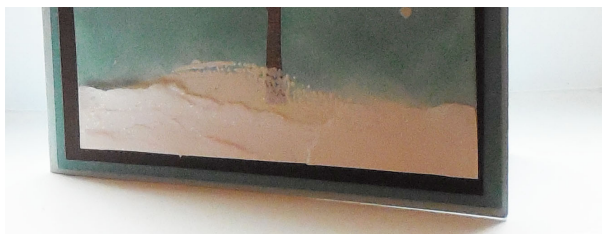
Step 2: Ink the Tree Trunk in Early Espresso ink and stamp on the on Whisper White layer. Cover with clear embossing powder and heat with heat gun until the embossing powder is melted.

Step 3: Ink the snow image with white ink and stamp the image below the tree. Emboss with white embossing powder and heat with gun until the embossing powder is melted.

Step 4: Ink the leaves with versamrk and stamp over the tree image. Ink the small snowflake stamps with versamark and randomly stamp around the tree. Cover with Irresdescent Ice embossing powder and heat until the embossing powder is melted.

Step 5: Use a sponge dauber to sponge soft sky ink around the Tree image. Ink up the dauber with lost lagoon ink and sponge the sky image down to the snow. Using a swirling motion evenly distributes the ink.

Step 6: Tear a small strip of whisper white cardstock and layer onto the bottom of the card below the tree trunk. Glue down the white pieces overlapping to look like snow drifts. Add a little Dazzling Details glitter to the top of the snow drifts. Spread across the snow.



Step 7: Allow the Dazzling Details to dry. Turn over the layer and trim off the excess white layers. Layer onto the card front.

That's it. Enjoy!

Brayered Sheltering Tree Card



Cardstock Cutting Dimensions:

Soft Sky cardstock (c/s): 5 ½" x 8 ½", scored at 4 ¼"

Whisper White c/s: 5 ¼" x 4"
3" x 4"

Marilyn SanClemente 978-458-0729 marilyn.sanclemente@comcast.net

images © Stampin' Up! Stamping New England Designs

Assembly Instructions:

Step 1: Ink up Tree with Early Espresso and stamp on 3" x 4" piece of whisper white cardstock.

Step 2: Randomly stamp the snowflakes from the Sheltering Tree stamp set around the tree and along the top of the card with versamark or White ink. Emboss with Dazzling Diamonds or White embossing powder and heat until the embossing powder is melted.

Step 3: Use post-it notes and tear to make a mask for snow drifts. Place along the bottom inch of the card. Make sure all the white along the bottom of the card is covered.

Step 4: Ink up a brayer with Soft Sky ink making sure that you roll the brayer completely around to ink the whole wheel. Roll the brayer along the top of the card. Re-ink and roll until the sky is the shade that you would like. NOTE: Soft sky is a soft color and you may need to re-ink your ink pad.

Step 5: Remove the post it notes from the bottom of the card. Use a blender pen or marker to draw faint lines for the edge of the snow drifts. Use a dauber and ink the edge of the 3" x 4" piece to define the edges of the piece. Attach to 4" x 5 ¼" piece of whisper white cardstock.

Step 6: Stamp desired sentiment on the bottom of the card.

Step 7: Score the Soft Sky cardstock at 4 ¼" and fold in half to form the card base. Attach white layer to the card front.

Step 8: Enjoy!

Marina Mist Any-Occasion Card

This card can be changed out for different seasons with the addition of leaves or flowers to the tree. The card base color can also change the feeling of the card!



Cardstock Cutting Dimensions:

Marina Mist cardstock (c/s): 8 ½" x 5 ½", scored at 4 ¼"

Whisper White c/s: 2 ½" x 3 ½"

Marina Mist c/s: 2 ¾" x 3 ¾"

Irresistably Yours DSP:

"leaf" pattern, 4" x 5 ¼"

Marilyn SanClemente 978-458-0729 marilyn.sanclemente@comcast.net

images © Stampin' Up! Stamping New England Designs

Assembly Instructions:

Step 1: Cut and score the paper using the measurements above.

Step 2: Using a Stampin' Sponge, gently change the color of the *Irresistably Yours* DSP with Marina Mist ink. Start off the side of the paper and make circular motions with the sponge until you achieve the color you're looking for. Attach to the Marina Mist c/s base.



Step 3: Stamp the ground image from the *Sheltering Tree* stamp set in Pear Pizzazz ink at the bottom of your small piece of Whisper White c/s. Stamp the tree image in Chocolate Chip ink. Attach to the smaller piece of Marina Mist c/s.

Step 4: Layer the Marina Mist/Whisper White layers over a doily with Stampin' Dimensionals, then attach to the card base that is already layered with the sponged DSP. Be careful when attaching the doily – it's very delicate and will rip easily.

Step 5: Stamp the sentiment of your choice on the inside of the card depending on your needs.!

That's it!

Marilyn SanClemente 978-458-0729 marilyn.sanclemente@comcast.net

Thinking of You

A beautiful card to show your special someone that you are thinking of them



Cardstock Cutting Dimensions:

Whisper White cardstock (c/s): 5 1/2" x 8 1/2", scored at 4 1/4", 5 1/2" x 4 1/4"

Island Indigo c/s: 4" x 5 1/4", 1/2" x 3 3/4"

Irresistibly Yours--- DSP:

"Flower" pattern, 3 3/4" x 5"

Marilyn SanClemente 978-458-0729 marilyn.sanclemente@comcast.net

images © Stampin' Up! Stamping New England Designs



Assembly Instructions:

Step 1: Take the Whisper White c/s measuring 5 ½" x 8 ½" and fold in half for the card base. Put aside.

Step 2: Take the large piece of Whisper White and using the Soft Suede, stamp the tree onto the paper. Next stamp the leaves onto the tree. Add the grass and swing. Using the third largest circle, cut out the tree using the Big Shot.

Step 3: Using the Wild Wasabi, stamp the sentiment onto the strip of Whisper White c/s and snip the side of the sentiment to make a banner

Step 4: Now, take the Brayer and ink it up with Island Indigo. Run it over the DSP, covering the paper. The flowers will have a film of color on it. When the entire DSP is covered, wipe the flowers clean until they are white again. Adhere it to the Island Indigo c/s then adhere it to the card base.

Step 5: Adhere the circle with the tree image on it onto the DSP with dimensionals. Add the Island Indigo strip onto the DSP and then the banner image.

Step 6: Enjoy!

Marilyn SanClemente 978-458-0729 marilyn.sanclemente@comcast.net

images © Stampin' Up! Stamping New England Designs

Sheltering Tree Surprise Card

This card gives a Peek of the surprise inside.



Cardstock Cutting Dimensions:

Soft Suede Cardstock: 4 ¼" x 5 ½"

Whisper White: 4" x 10 ½" scored at 5 ¼"

Blushing Bride: 3" x 3"

Irresistibly Yours Designer Paper:

2" x 4" – scallop design

Marilyn SanClemente 978-458-0729 marilyn.sanclemente@comcast.net

images © Stampin' Up! Stamping New England Designs



Assembly Instructions:

Step 1: Ink up a brayer with crumb cake ink and roll over the Irresistibly Yours designer paper to add color. Set aside to dry.

Step 2: Score Whisper White cardstock at 5 ¼" and fold in half the long way. Stamp tree trunk from the Sheltering Tree stamp set with Soft Suede ink on the inside center of the card. Stamp large stamp with leaves with Blushing Bride ink over the tree branches.

Step 3: Ink the small leaf stamp with Strawberry Slush ink and randomly stamp over the tree to add the look of berries. Stamp sentiment with Soft Suede ink on lower left side below the tree.

Step 4: Use the 1 ¾" circle punch and punch a hole through the top layer of the card on the upper right to make a window for the tree. Use the 1 ¾" circle punch to make a hole in the 3" square scrap of Blushing Bride cardstock. Line up the 2 3/8" scallop circle punch around the punched hole and punch out the scallop. NOTE: when make a "frame" using punches, always use the inside punch first to line up the outer punch to make the frame.

Step 5: Line up the piece of brayered designer paper along the bottom of the card. Attach a piece of the Sahara Sand ribbon along the top edge of the designer series paper.

Step 6: Stamp "thinking of you" above the Lace with Soft Suede ink. Add Rhinestone pearls as desired.

Enjoy!

Marilyn SanClemente 978-458-0729 marilyn.sanclemente@comcast.net

images © Stampin' Up! Stamping New England Designs

Sheltering Tree Card

A Stunning quick and simple all occasion card.



Cardstock Cutting Dimensions

Pink Pirouette Cardstock: 5 ½" x 4 ¼"

Early Espresso Cardstock: 5 ¼" x 4"

Naturals White Cardstock: 5" x 3 ¾"

Marilyn Sanclemente 978-458-0729 marilyn.sanclemente@comcast.net

images © Stampin' Up! Stamping New England Designs



Assembly Instructions:

Step 1: Score Pink Pirouette cardstock at 4 ¼" and fold in half to form card base. Attach Early Espresso cardstock to Pink Pirouette card base.

Step 2: Stamp Tree base with Early Espresso ink on Naturals white cardstock.

Step 3: Stamp the leaves over the Tree image with Pink Pirouette ink. Re-ink the stamp with Strawberry Slush ink and stamp again.

Step 4: Tie a box with the Strawberry Slush Baker's twine and attach to the base of the tree with a Glue dot.

Enjoy this quick and simple card!

Marilyn SanClemente 978-458-0729 marilyn.sanclemente@comcast.net

images © Stampin' Up! Stamping New England Designs